

NCC199CDV (GQ-C3261WZ-FF-1 US) Commercial Condensing Water Heater Specification Sheet

- **Standard Input** - 12,800-199,900 BTUh / 0.4 - 11.1gpm
- **Uniform Energy Factor (UEF)** - 0.98 (NG) / 0.98 (LP)

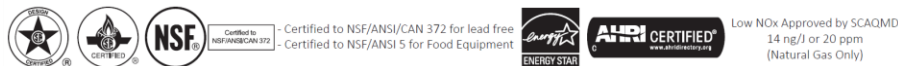
- **Compact Design** - ANSI Z21.10.3/CSA 4.3 certified design that can be wall-mounted indoors or installed outdoors using the optional Vent Cap
- **Heat Exchanger** - manufactured with high quality stainless steel
- **Venting Options** - available in Direct Vent model that can use either 2", 3" or 4" Schedule 40/80 PVC/CPVC, 2" or 3" PP/ Single vent convertible, or installed outdoors with Vent Cap.
- **Common Vent Compatible** - Vent up to 12 units on a single venting system with integrated backflow preventer.
- **Bluetooth® Connectivity**
- **Wifi Capable**
- **Built-In Display**
- **Field Convertible** - Default NG gas type. Field LP convertible (parts included).
- **Direct Electronic Ignition**
- **Compatible with 1/2" gas pipe** - see installation manual

- **Multi-System Capability** - up to 8 units can be linked together using Quick Connect Pro, or up to 24 units can be connected using a system controller.
- **Fully Modulating** - BTU input range from 12,800 to 4.8 million BTUh (with 24 unit System) with stable combustion provided by gas venturi and pre-mix burner. Each individual unit 16:1 Turndown Ratio
- **Temperature Controls** - can be precisely adjusted from 100° F to 185° F using Built-in digital display or the Bluetooth® app.
- **Safety Devices** - Flame Sensor, Overheat Prevention Device, Lighting Protection Device, Freeze Protection, Fan Rotation Detector, Thermal Fuse, Condensate Overfill
- **10 Year* Limited Heat Exchanger Warranty for Commercial Use**
- **5 Year Limited Parts Warranty & 1 Year Reasonable Labor**
- **Approvals** - CSA, NSF5, NSF372**, Low NOx Approved by SCAQMD (Rule 1146.2)



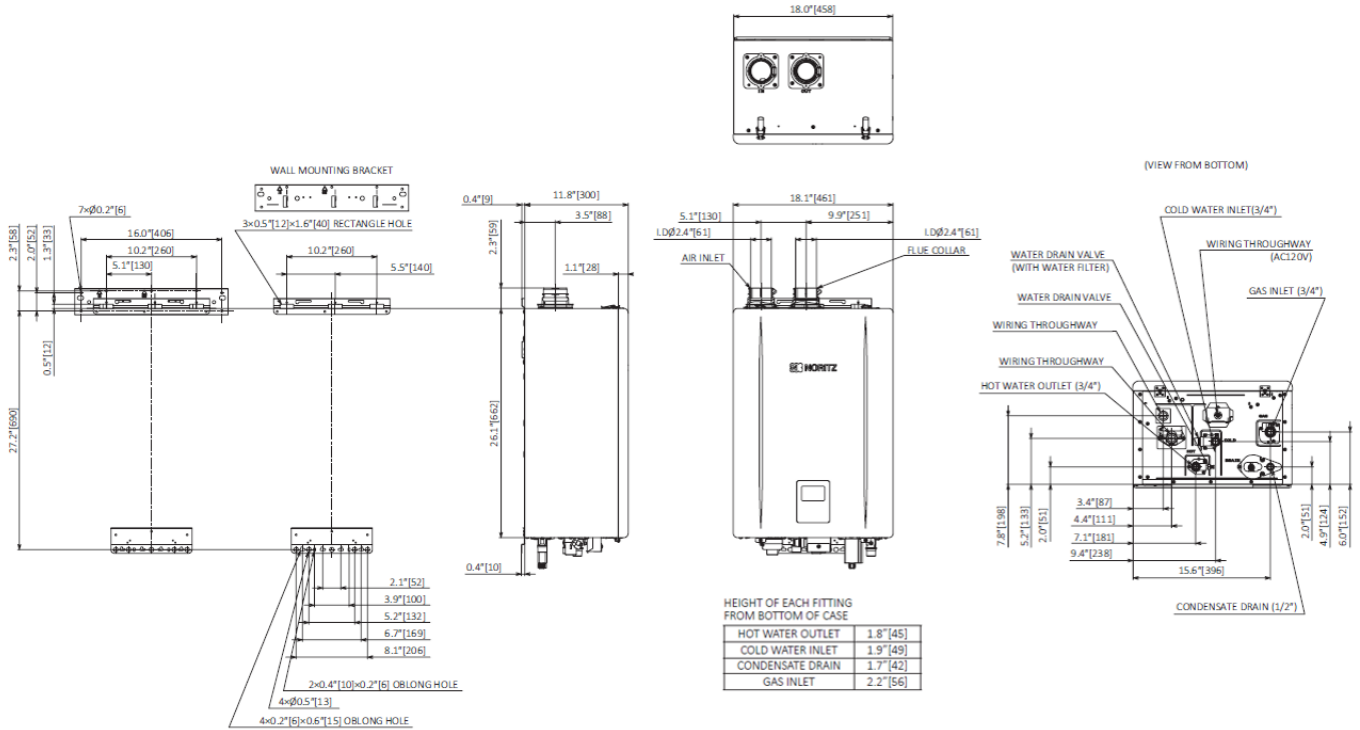
Accessories

- Universal Concentric Vent Kit (#PVC-UCVK)
- Low Profile Termination Kit (#PVC-_LPT)
- PVC Concentric Termination (#PVC-_CT)
- 3" Horizontal Hood Termination (#PVT-HL)
- SV Conversion (#SV-CK-2-1)
- Bird screen (#VT-_PVCS)
- Outdoor Vent Cap (#VC-6-_)
- Plastic Rain Cap (#PRC-1)
- Scale Shield Water Treatment (#SS-HB-3)
- External Recirculation Pump Kit (#RPK-EXT-P)
- Isolator Valves (#IK-WV-200-_)
- Wireless Monitor (#NAW-1 US)
- System Controller
 - 6-unit (#SC-401-6M)
 - 12-unit (#SCU-401-12M)
 - 24-unit (#SCU-401-24M)
- Quick Connect Cord (#QC-2)
- Neutralizer for 1-unit (#NC-1W)
- Neutralizer for up to 16-unit (#NT20A)
- Descale Kit (#DSCL-KIT)
- Remote Controller (#RC-7651M-A)
- Remote Controller (#RC-9018M)
- Remote Controller Cord (#RC-CORD_)



* Refer to the Noritz Limited Warranty for complete coverage details, at Noritz.com
 ** Product conforms with lead content requirements for "lead free" plumbing as defined by California, Vermont, Maryland, and Louisiana state laws and the U.S. Safe Drinking Water Act.

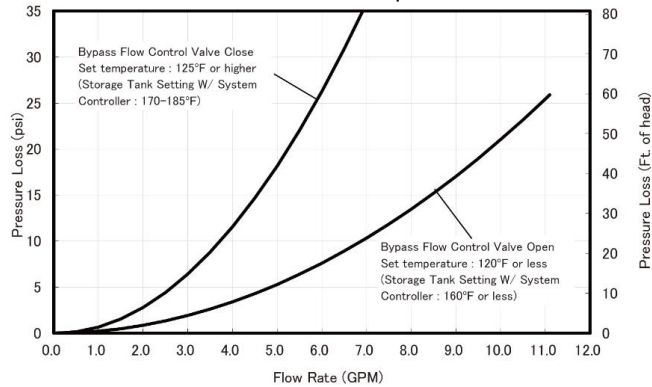
Dimensions



Flow Rates

Temperature Rise (°F)	30	40	45	50	60	70	80	90	100	110	120	130	140
NCC199CDV (GPM)	11.1	9.8	8.7	7.8	6.5	5.6	4.9	4.4	3.9	3.6	3.3	3.0	2.8

Pressure Drop



Specifications

Model Name		NCC199CDV (GQ-C3261WZ-FF-1 US)
Weight		62 pounds
Operating Pressure		15 - 150 psi
Gas Supply Pressure		NG: 3.5" - 10.5" LP: 8.0" - 13.0"
Water Holding Capacity		0.71 Gallon (2.7L)
Connection Sizes	Water Inlet	3/4" NPT
	Hot Water Outlet	3/4" NPT
	Gas Inlet	3/4" NPT
	Condensate Drain	1/2" NPT
Power	Supply	120VAC (60Hz), less than 4 amperes
	Consumption	NG: 105W LP: 108W Freeze Protection: 114W
Freeze Protection		Outdoor: -4°F Indoor: -30°F
Temperature Settings	°F Mode	100-150°F (in 5°F intervals), 160°F, 170°F, 185°F (14 options)
	°C Mode	37-48°C (in 1°C intervals), 50-85°C (in 5°C intervals) (20 options)
Materials	Front Cover	Hot-dipped zinc-aluminum-magnesium-alloy-coated steel w/ Polyester Coating
	Casing	Side/Top Plate: Hot-dipped zinc-aluminum-magnesium-alloy-coated steel w/ Polyester Coating Back, Bottom Plate: Hot-dipped zinc-aluminum-magnesium-alloy-coated steel w/o Coating