



EZ71DV (GQ-C2661WX-FF US)
EZ98DV (GQ-C2861WX-FF US)
EZ111DV (GQ-C3261WX-FF US)
Residential Condensing Water Heater
Specification Sheet

- **Standard Input** – 12,800-199,900 BTU/h / 0.4 - 11.1 gpm (EZ111)
12,800-180,000 BTU/h / 0.4 - 9.8 gpm (EZ98)
12,800-160,000 BTU/h / 0.4 - 9.0 gpm (EZ71)
- **Uniform Energy Factor (UEF)** - 0.98 (NG) / 0.98 (LP)
- **Compact Design** - ANSI Z21.10.3/CSA 4.3 certified design that can be wall-mounted indoors or installed outdoors using the optional Vent Cap
- **Heat Exchanger** - manufactured with high quality stainless steel
- **Venting Options** - available in Direct Vent model that can use either 2", 3" or 4" Schedule 40/80 PVC/CPVC, 2" or 3" PP / Single vent convertible, flexible PP vent, or installed outdoors with Vent Cap.
- **Bluetooth® Connectivity**
- **Wifi Capable**
- **Built-In Display**
- **Field Convertible** – Default NG gas type. Field LP convertible (parts included).
- **Direct Electronic Ignition**
- **Compatible with 1/2" gas pipe** - see installation manual
- **Multi-System Capability** - units can be linked together by using the optional 2-unit Quick Connect for twice the hot water capacity
- **Fully Modulating** - BTU input range from 12,800 to 320,000/360,000/399,800 BTU/h (with Quick Connect) with stable combustion provided by gas venturi and pre-mix burner. Each individual unit 12.5/14/16:1 Turndown Ratio
- **Temperature Controls** - can be precisely adjusted from 100°F to 140°F using either Built-in digital display or the Bluetooth® app.
- **Safety Devices** - Flame Sensor, Overheat Prevention Device, Lightning Protection Device, Freeze Protection, Fan Rotation Detector, Thermal Fuse, Condensate Overfill
- **25 Year* Limited Heat Exchanger Warranty for Residential Use**
- **5 Year Limited Parts Warranty & 1 Year Reasonable Labor**
- **Approvals** - CSA, UPC, LOW-LEAD**, NSF, Low NOx Approved By SCAQMD (Rule 1146.2)



* Refer to the Noritz Limited Warranty for complete coverage details, at Noritz.com

** This product complies with California AB 1953 Low Lead Law and section 1417(d) of the Safe Drinking Water Act

NORITZ AMERICA CORPORATION

11160 Grace Avenue, Fountain Valley, CA 92708 Tel. 1-866-7NORITZ

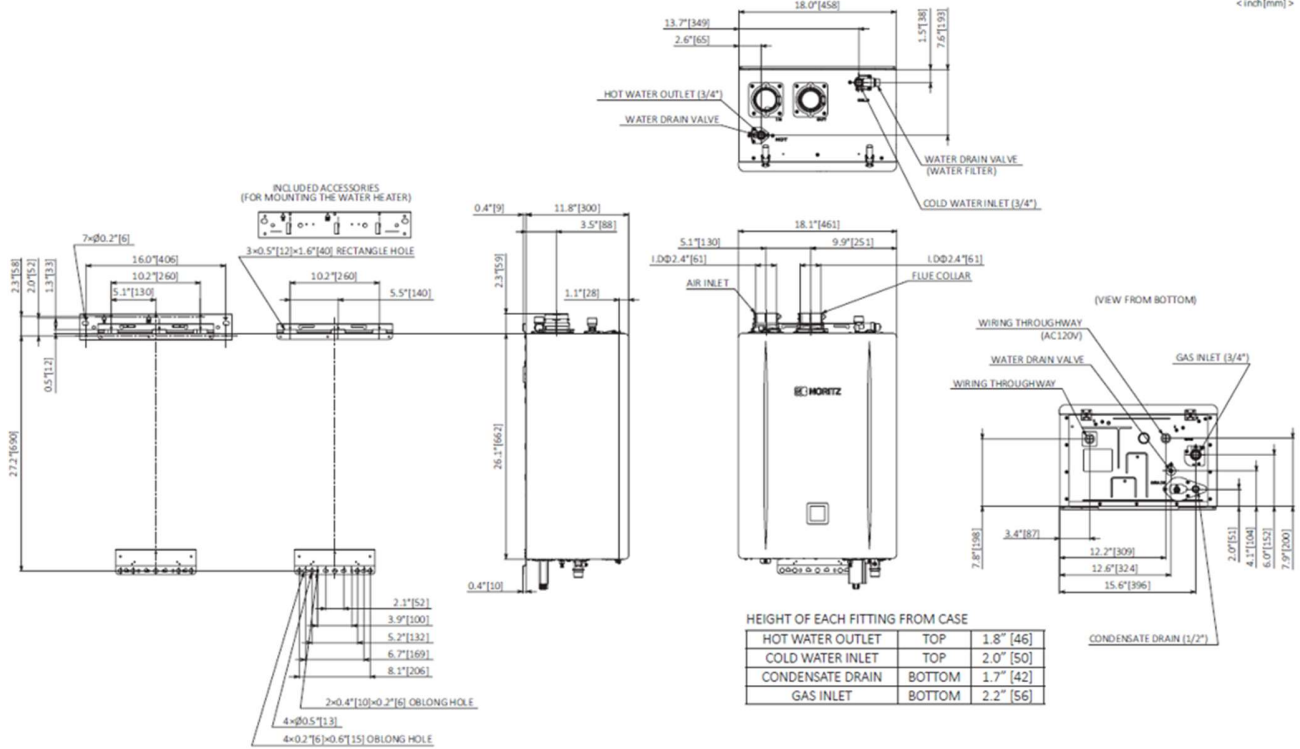
www.noritz.com



Accessories

- ☐ Universal Concentric Vent Kit (#PVC-UCVK)
- ☐ Low Profile Termination Kit (#PVC-_LPT)
- ☐ PVC Concentric Termination (#PVC-_CT)
- ☐ 3" Horizontal Hood Termination (#PVT-HL)
- ☐ SV Conversion (#SV-CK-2-1)
- ☐ Bird screen (#VT-_PVCS)
- ☐ Outdoor Vent Cap (#VC-6-_)
- ☐ Plastic Rain Cap (#PRC-1)
- ☐ PP Flex Vent Kit (#EZ2FVK-_)
- ☐ EZTR Conversion Kit (#EZ2-CK-1)
- ☐ No Roof Kit (#NRK-1)
- ☐ Scale Shield Water Treatment (#SS-HB-3)
- ☐ External Recirculation Pump Kit (#RPK-EXT)
- ☐ Isolator Valves (#IK-WV-200-_)
- ☐ Wireless Monitor (#NAW-1 US)
- ☐ Quick Connect Cord (#QC-2)
- ☐ Neutralizer for 1-unit (#NC-1W)
- ☐ Descale Kit (#DSCL-KIT)
- ☐ Remote Controller (#RC-7651M-A)
- ☐ Remote Controller (#RC-9018M)
- ☐ Remote Controller Cord (#RC-CORD_)

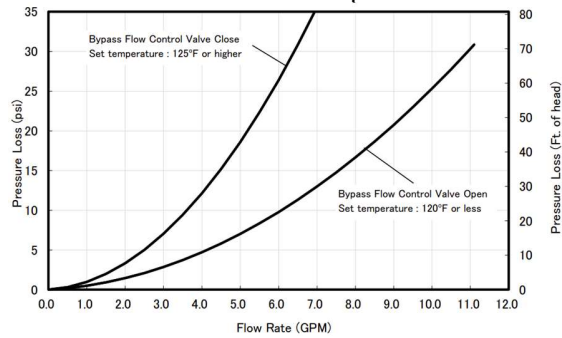
Dimensions



Flow Rates

Temperature Rise (°F)	30	40	45	50	60	70	80	90	100	110	120	130	140
EZ111DV (GPM)	11.1	9.8	8.7	7.8	6.5	5.6	4.9	4.4	3.9	3.6	3.3	3.0	2.8
EZ98DV (GPM)	9.8	8.6	7.7	6.9	5.7	4.9	4.3	3.8	3.4	3.1	2.9	2.7	2.5
EZ71DV (GPM)	9.0	7.7	6.9	6.2	5.2	4.4	3.9	3.4	3.1	2.8	2.6	2.4	2.2

Pressure Drop



Specifications

Model Name		EZ71DV / EZ98DV / EZ111DV (GQ-C2661 / 2861 / 3261WX-FF US)
Weight		60 pounds
Operating Pressure		15 - 150 psi
Gas Supply Pressure		NG: 3.5" - 10.5" LP: 8.0" - 13.0"
Water Holding Capacity		0.74 Gallon (2.8L)
Connection Sizes	Water Inlet	3/4" NPT
	Hot Water Outlet	3/4" NPT
	Gas Inlet	3/4" NPT
	Condensate Drain	1/2" NPT
Power	Supply	120VAC (60Hz), less than 4 amperes
	Consumption	NG: 62W (EZ71) 81W (EZ98) 105W (EZ111) LP: 65W (EZ71) 83W (EZ98) 108W (EZ111) Freeze Protection: 114W
Freeze Protection		Outdoor: -4° F Indoor: -30° F
Temperature Settings	°F Mode	100-140° F (In 5° F intervals) (9 Options)
	°C Mode	37-48° C (In 1° C intervals), 50-60° C (In 5° C intervals) (15 Options)
Materials	Front Cover	Hot-dipped zinc-aluminum-magnesium-alloy-coated steel w/ Polyester Coating
	Casing	Side/Top Plate: Hot-dipped zinc-aluminum-magnesium-alloy-coated steel w/ Polyester Coating Back, Bottom Plate: Hot-dipped zinc-aluminum-magnesium-alloy-coated steel w/o Coating