



EZTR50 & EZTR75 PRO Residential Condensing Tankless Bundle Set Specification Sheet

- **Bundle Package** - Simplify installation with water heater EZ98DV (GQ-C2861WX-FF US) (EZTR50) or EZ111DV (GQ-C3261WX-FF-US) (EZTR75) and all accessories for installation in one box
- **Water Connection** - Top mount connections for easy water connections
- **Standard Input** - Gas consumption ranges from 12,800 BTU/h to 180,000 BTU/h (EZ98DV (GQ-C2861WX-FF US)) and 199,900 BTU/h (EZ111DV (GQ-C3261WX-FF US))
- **Capacity Range** - Flow rates from 0.4 GPM up to 9.8 GPM (EZ98DV (GQ-C2861WX-FF US)) and 11.1 GPM (EZ111DV (GQ-C3261WX-FF US))
- **Compact Design** – ANSI Z21.10.3/CSA 4.3 certified design that can be wall-mounted indoors***
- **Bluetooth® Connectivity**
- **Wi-Fi Capable**
- **Built-In Display**
- **Field Convertible** – Default NG gas type. Field LP convertible (parts included)
- **Heat Exchanger** – High quality stainless-steel design for primary and secondary heat exchanger
- **Compatible with 1/2" gas pipe** - Refer to installation manual
- **Venting Options** – Uses indoor 2" flexible polypropylene (included)
- **Direct Electronics Ignition**
- **Quick Connect Pro** – Two identical units can be linked together by using the optional Quick Connect Cord (#QC-2) for twice the hot water capacity
- **Uniform Energy Factor** – 0.98 (NG) 0.98(LP)
- **Power Cord Installation Kit** – 6' power cord is included
- **Safety Devices** – Flame Sensor, Overheat Prevention Device, Lightning Protection Device, Freeze Protection, Fan Rotation Detector, Thermal Fuse, Condensate Overflow
- **Additional Features** – Temperature Lockout, High Elevation Adjustment, Condensate Overflow Monitoring System, Service Reminder Function, and Wi-Fi Ready
- **25 Year* Limited Heat Exchanger Warranty for Residential Use**
- **5 Year Limited Parts Warranty & 1 Year Reasonable Labor**
- **Approvals***** – CSA, UPC, LOW-LEAD**, NSF, Low NOx Approved By SCAQMD (Rule 1146.2)



* Refer to the Noritz Limited Warranty for complete coverage details at www.noritz.com

** This product complies with California AB1953 Low Lead Law and section 1417(d) of the Safe Drinking Water Act

***The approvals listed are for water heater. For inquiries on approvals for any included accessory, contact Noritz America.

NORITZ AMERICA CORPORATION

11160 Grace Avenue, Fountain Valley, CA 92708 Tel. 1-866-7NORITZ www.noritz.com



Included Parts

- ☐ EZ98DV (GQ-C3261WX-FF US) [EZTR50]
- ☐ EZ111DV (GQ-C3261WX-FF US) [EZTR75]

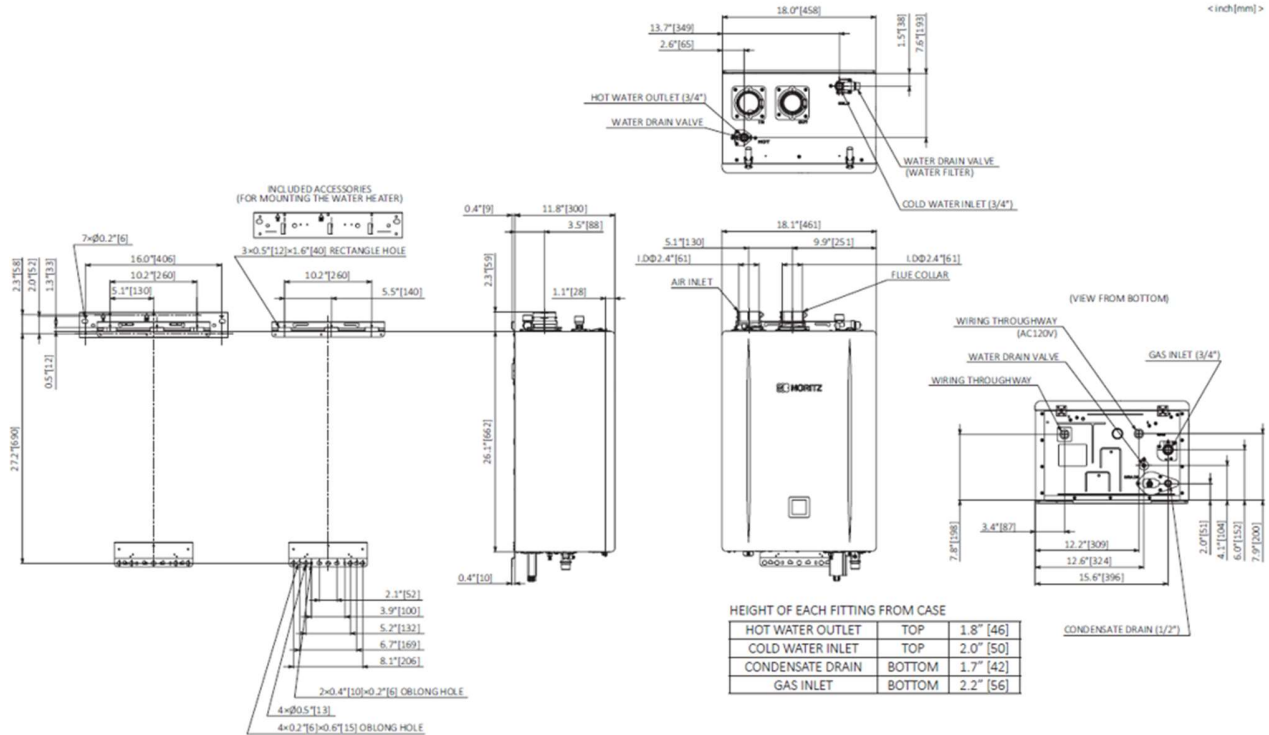


- ☐ Flex Vent 2" Conversion Kit (#EZ2-CK-_)
- ☐ Flex Vent 2" Kit 25 Feet (#EZ2FVK-1)
- ☐ Isolator Valve Set (#IK-WV-200-_)

Accessories

- ☐ Flex Vent 2" Kit 35 Feet (#EZ2FVK-2-1)
- ☐ Diffuser Kit 25" (#EZ2-DK-1)
- ☐ Diffuser Kit 35" (#EZ2-DK-2)
- ☐ Scale Shield Water Treatment (#SS-HB-3)
- ☐ External Recirculation Pump Kit (#RPK-EXT)
- ☐ Wireless Monitor (NWC-ADAPTER)
- ☐ Quick Connect Cord (#QC-2)
- ☐ Neutralizer for 1-unit (#NC-1W)
- ☐ Descale Kit (#DSCL-KIT)
- ☐ Remote Controller (#RC-7651M-A)
- ☐ Commercial Remote Controller (#RC-9018M)
- ☐ Remote Controller Cord (#RC-CORD_)

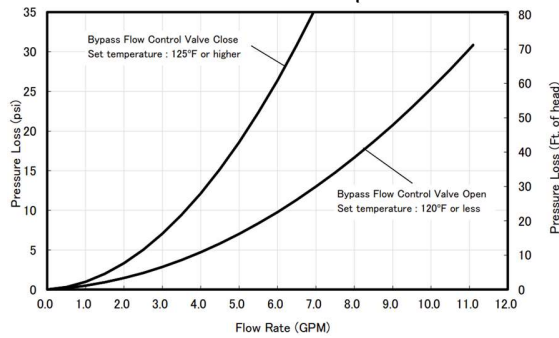
Dimensions



Flow Rates (GPM)

Temperature Rise (°F)	30	40	45	50	60	70	80	90	100	110	120	130	140
EZ111DV (GQ-C3261WX-FF US)	11.1	9.8	8.7	7.8	6.5	5.6	4.9	4.4	3.9	3.6	3.3	3.0	2.8
EZ98DV (GQ-C2861WX-FF US)	9.8	8.6	7.7	6.9	5.7	4.9	4.3	3.8	3.4	3.1	2.9	2.7	2.5

Pressure Drop



Specifications

Model Name		EZ98DV / EZ111DV (GQ-C2861 / 3261WX-FF US)	
Weight		60 pounds	
Operating Pressure		15 - 150 psi	
Gas Supply Pressure		NG: 3.5" - 10.5" LP: 8.0" - 13.0"	
Water Holding Capacity		0.74 Gallon (2.8L)	
Connection Sizes	Water Inlet	3/4" NPT	
	Hot Water Outlet	3/4" NPT	
	Gas Inlet	3/4" NPT	
	Condensate Drain	1/2" NPT	
Power	Supply	120VAC (60Hz), less than 4 amperes	
	Consumption	NG: 81W (EZ98) 105W (EZ111) LP: 83W (EZ98) 108W (EZ111) Freeze Protection: 114W	
Freeze Protection		Outdoor: -4°F Indoor: -30°F	
Temperature Settings	°F Mode	100-140°F (In 5°F intervals) (9 Options)	
	°C Mode	37-48°C (In 1°C intervals), 50-60°C (In 5°C intervals) (15 Options)	
Materials	Front Cover	Hot-dipped zinc-aluminum-magnesium-alloy-coated steel w/ Polyester Coating	
	Casing	Side/Top Plate: Hot-dipped zinc-aluminum-magnesium-alloy-coated steel w/ Polyester Coating Back, Bottom Plate: Hot-dipped zinc-aluminum-magnesium-alloy-coated steel w/o Coating	

Noritz America reserves the right to discontinue, or change at any time, the designs and/or specifications of its products without notice

Rev10/2024